

Installing the Peachtree X audio driver on your Windows computer to support 24bit/192kHz playback via USB

• USB Audio Driver for Windows 7 and Windows 8 and 8.1

Install **only** if you are using one of these Peachtree Audio amplifiers, preamps or DACs:

- decco65
- nova125
- novaPre
- Grand Pre X-1
- Grand Integrated X-1
- DAC•iT X (purchased October 2014 or earlier)
- X1 USB to SPDIF Converter (purchased April 2015 or earlier)

If you are uncertain whether you need to install this driver, consult the USB Drivers section of Peachtree Audio's website: <http://www.peachtreeaudio.com/support/usb-drivers.html>

Once you have determined that your Peachtree amplifier or DAC requires a driver to be installed, you may download the driver from the Peachtree USB Drivers page (see above) or download it directly here:

[Peachtree 24/192 USB X audio driver](#)

IMPORTANT: After downloading the driver, **please disconnect your computer from the internet** before starting to install the driver. *This will prevent your computer from searching the internet and downloading a driver that may cause the installation to fail.*

Preparing for installation

IMPORTANT: Do NOT connect a USB cable from your computer to your Peachtree amplifier or DAC at this time!

If a USB cable is currently connected, please unplug it from your Peachtree. (A driver may automatically load when the cable is plugged in, and the Peachtree X driver will not install properly.)

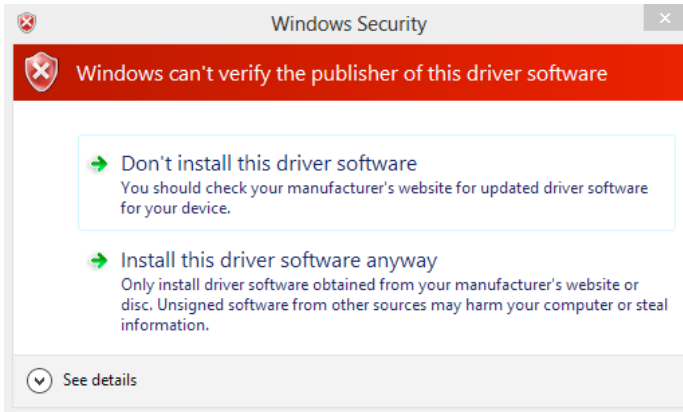
If earlier Peachtree or other XMOS drivers have been installed on your computer, please uninstall them. (From **Control Panel** choose **Programs** and select **Uninstall a program**; scroll to search for audio drivers labeled Peachtree, Theyscon or XMOS.) After uninstalling, restart your computer.

If your computer operating system is Windows 8 or 8.1:

Follow the instructions in the next section of this document: **Disabling driver signature enforcement in Windows 8 and 8.1**. This is a temporary step necessary in order to install the Peachtree X driver. Driver signature enforcement will be re-enabled upon startup following driver installation.

If your computer operating system is an earlier version of Windows, skip the next section and proceed to **Driver installation**.

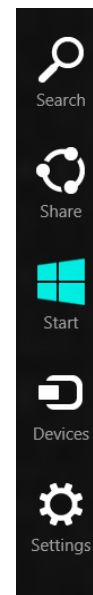
Disabling driver signature enforcement in Windows 8 and 8.1



Note: You are following Microsoft's guideline for safe installation of driver software by downloading the driver directly from Peachtree Audio.

Open the charms bar. (Press the **Windows logo key** and **C** together)

Five charms appear on the right side of your screen. Click on **Settings**



Click on **change PC settings** at the bottom right of your screen

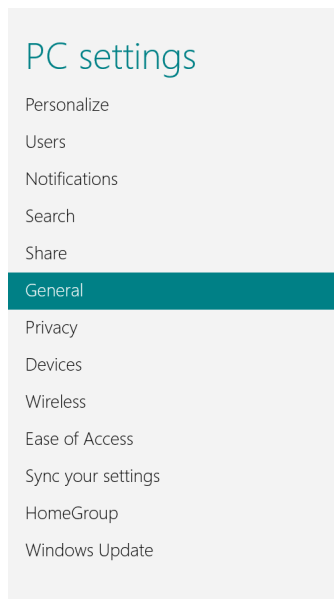


We want to get to the **Advanced startup** option. Windows 8 and Windows 8.1 differ slightly in how to get there.

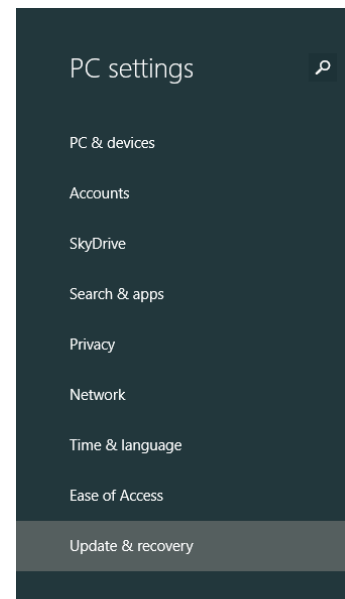
In Windows 8: Choose **General**

In Windows 8.1: Click on **Update & recovery**; then choose **Recovery**

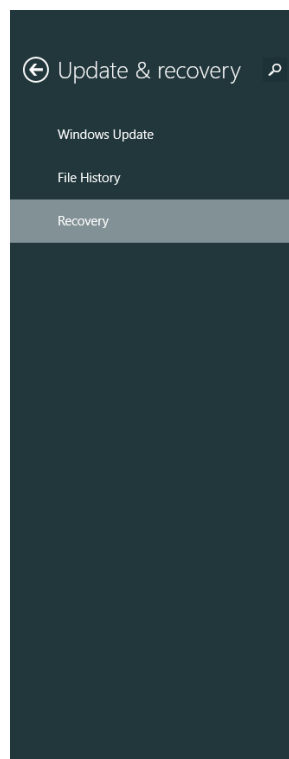
Windows 8



Windows 8.1



Under Advanced startup
click on **Restart now**



Refresh your PC without affecting your files

If your PC isn't running well, you can refresh it without losing your photos, music, videos, and other personal files.

[Get started](#)

Remove everything and reinstall Windows

If you want to recycle your PC or start over completely, you can reset it to its factory settings.

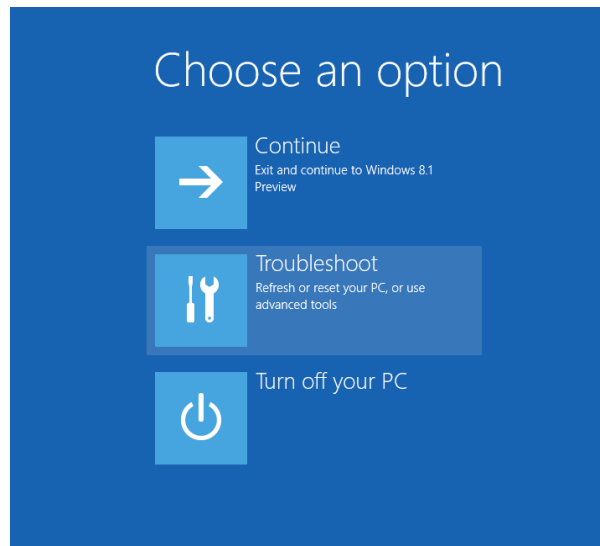
[Get started](#)

Advanced startup

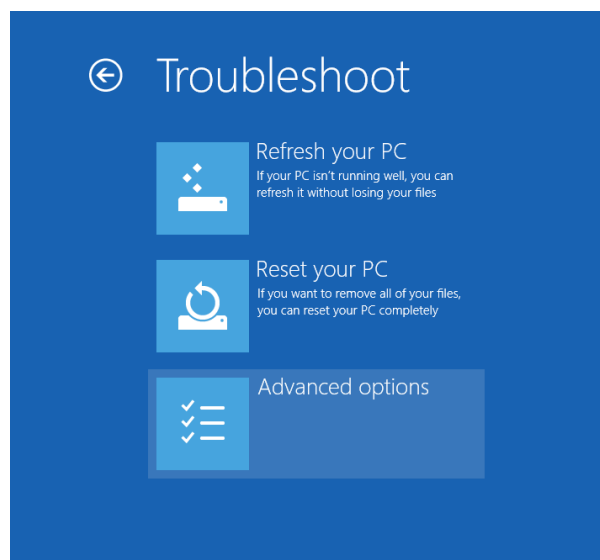
Start up from a device or disc (such as a USB drive or DVD), change Windows startup settings, or restore Windows from a system image. This will restart your PC.

[Restart now](#)

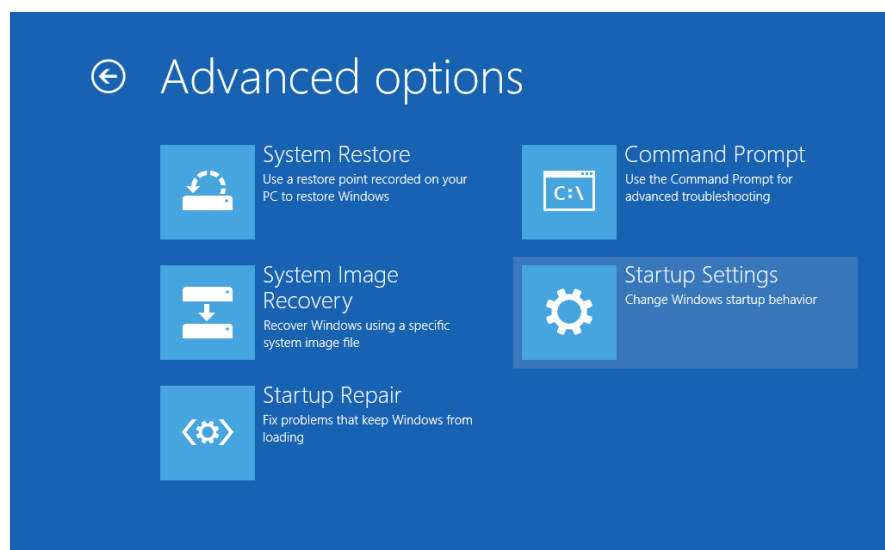
Under Choose an option
click on **Troubleshoot**



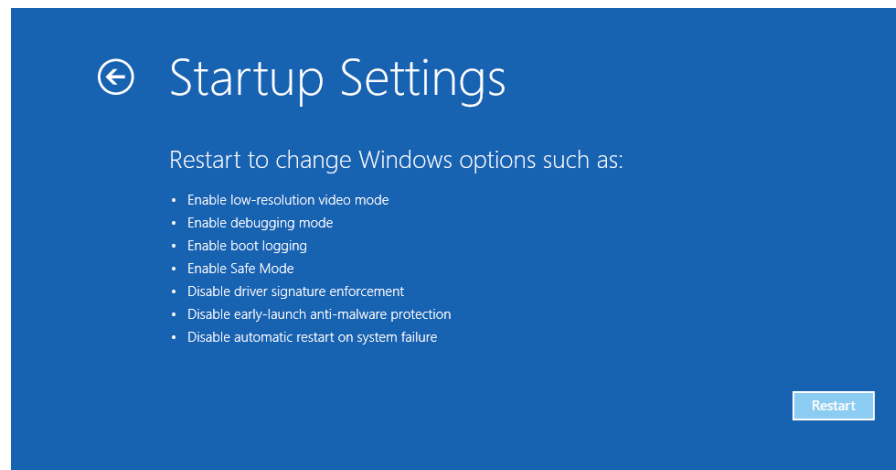
Under Troubleshoot
click on **Advanced options**



Under Advanced options
click on **Startup settings**

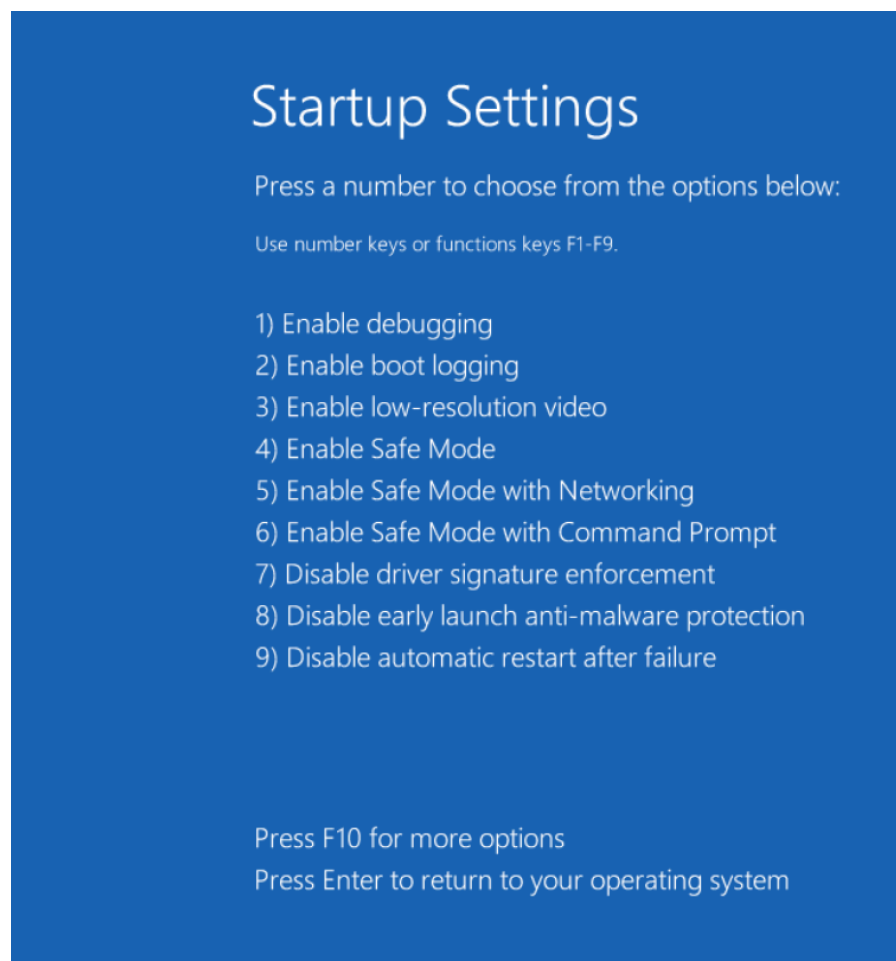


Under Startup settings
click **Restart**



Your computer will restart
and present you with
several options.

Choose **Disable driver
signature enforcement**
(option 7) by pressing the **7**
key or the **F7 function key**



You are now ready to install the Peachtree driver you previously downloaded. Follow the instructions in **Driver installation**.

Driver installation

Open the downloaded folder **Peachtree 24 192 USB X_V1[1].6** and click on the **setup application** icon.

You may be asked "Do you want to allow the following program from an unknown publisher to make changes to this computer?" Click **Yes**.

Follow the **Setup Wizard** steps to install the driver.

When instructed to do so (in red text), connect the computer to your Peachtree amplifier/DAC. Use a USB type A to B cable: The "A" end connects to the computer and the "B" end connects to the USB input of your Peachtree. For best performance we recommend not using a USB hub.

Continue with the installation, using the default Program Files location for the driver install.

When asked, always select **install this driver software anyway** (you may be asked 2 times). Note that there may be a flashing "shield" in the task bar at the bottom; click it, and allow the change.

Installation normally takes 1 to 5 minutes.

Click **Finish** and you are just a step away from listening to music.

In the Sound/Playback settings in your computer's Control Panel, select **Peachtree 24/192 USB X** and make it the default playback device.

Play a music file and verify there is sound from your Peachtree.

If your computer operating system is Windows 8 or 8.1:

Restart your computer to exit **Advanced startup mode**. Normal startup is now enabled.

Enjoy the music!