

Decco65 | nova125 | novaPre | Grand Integrated X1 | Grand Pre X1 | X1  
**USB Audio Driver for Windows XP, Vista, Windows 7 and Windows 8**

Before streaming audio via your Windows PC's USB connection to any of the Peachtree components listed above, you must download and install the **Peachtree 24 192 USB X** audio driver. **Windows 8 users** need to disable driver signature enforcement before proceeding. Instructions can be found here:

<http://www.windows7hacker.com/index.php/2012/08/how-to-install-an-un-signed-3rd-party-driver-in-windows-8/>

Please directly connect your computer to the Peachtree with a USB type A to B cable. For best performance, we recommend not using a USB hub.

---

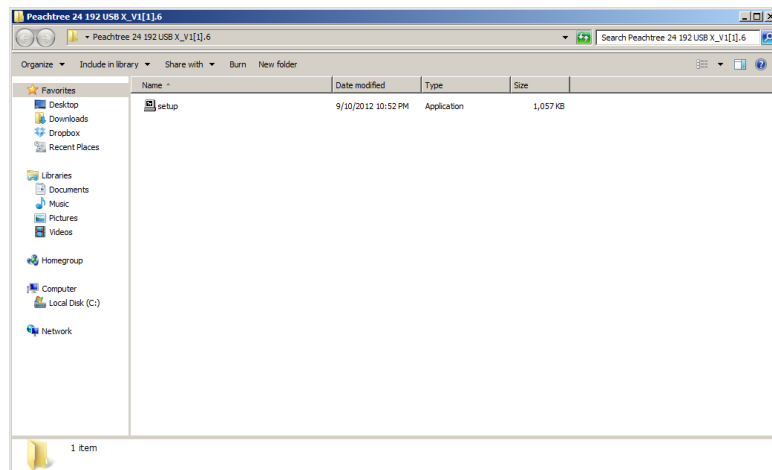
### STEP ONE

Locate and open the **Peachtree 24 192 USB X\_V1[1].6** folder from the installation CD or download from <http://www.peachtreeaudio.com/support/usb-drivers.html>.

---

### STEP TWO

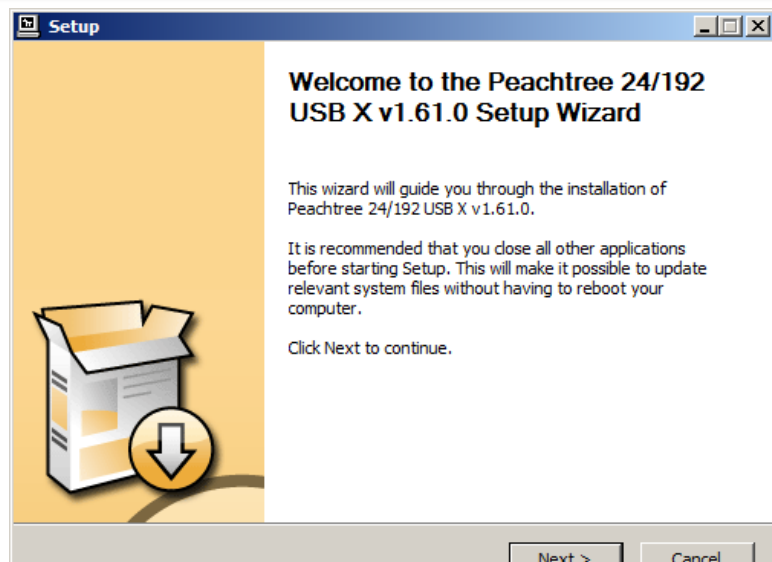
Double click the **setup** application icon to start the driver installation.



---

### STEP THREE

You should see the driver install Welcome screen. Click **Next**.



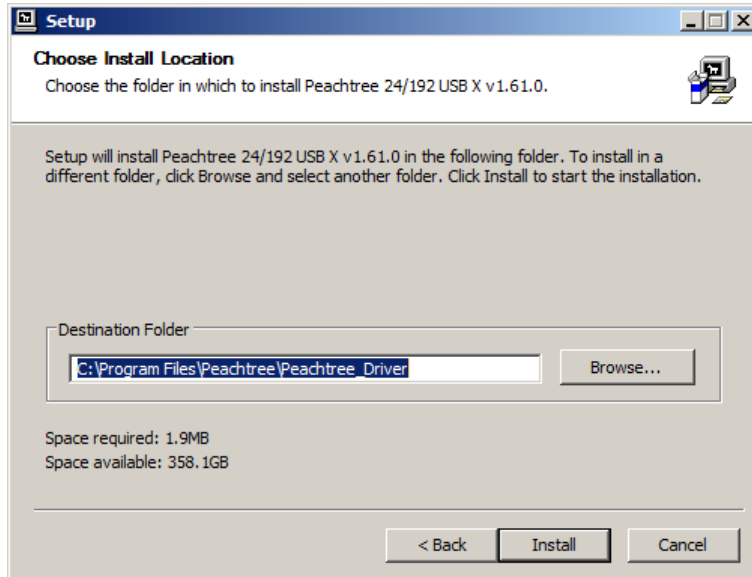
#### STEP FOUR

If your PC isn't already connected to your Peachtree via a type A to B USB cable, please connect them now. Once connected click **Next**. The install process will not proceed if you are not connected.



#### STEP FIVE

Install the Peachtree Driver in the default Program Files location. Click the **Install** button.



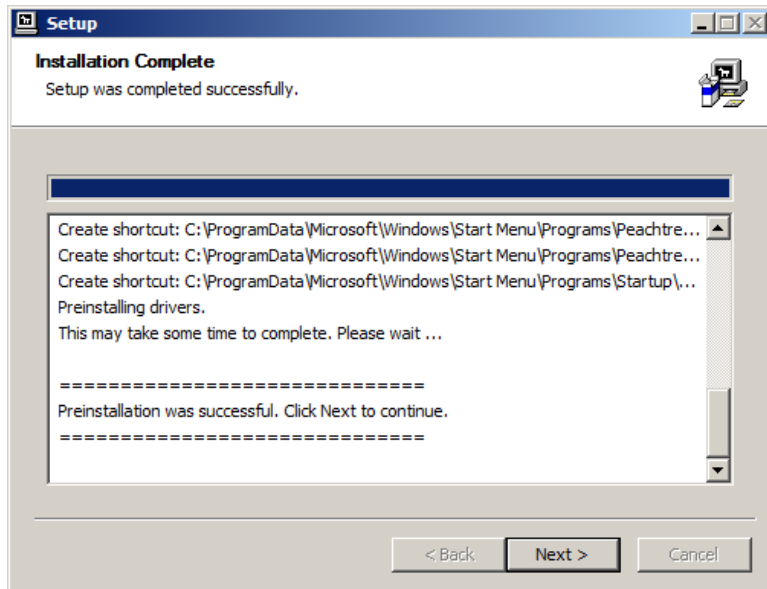
#### STEP SIX

Windows security feature may ask you two times to click on **Install this driver software anyway**.



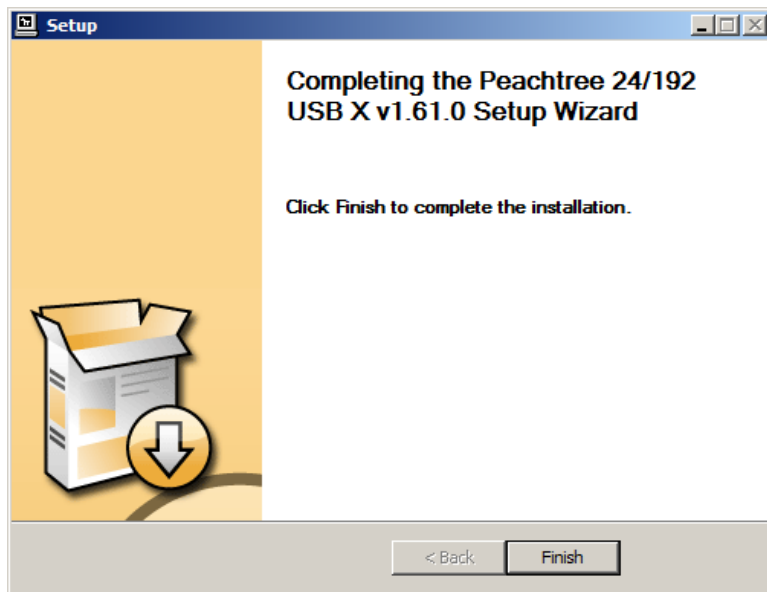
**STEP SEVEN**

Install generally takes 1-5 minutes. Once installation is complete please click **Next**.



**STEP EIGHT**

Click **Finish** to complete the install process.



**STEP NINE**

Choose the **Peachtree 24/192 USB X** sound output device through the Sound settings in your Control Panel. Set this device as default.

Open your music playback software and enjoy!

